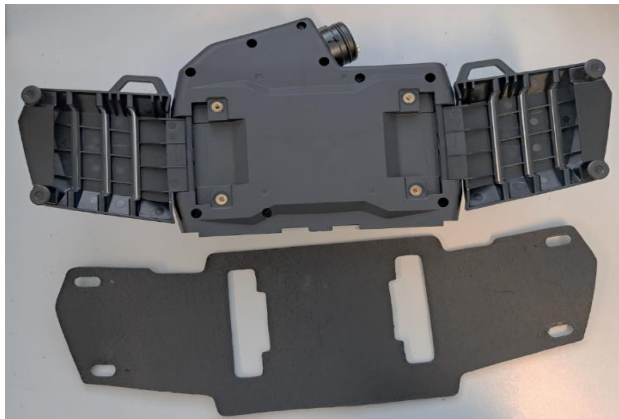
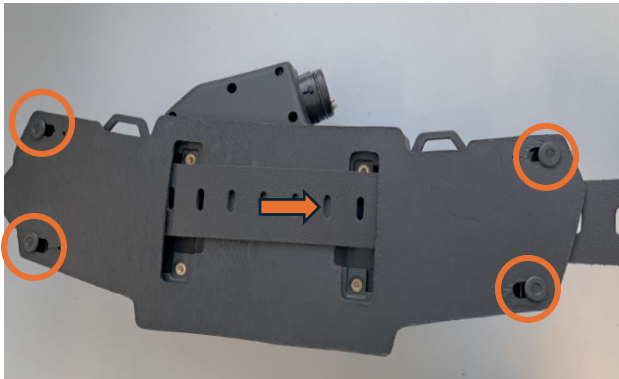
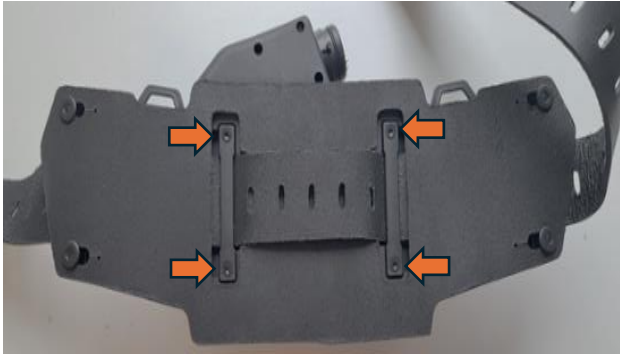
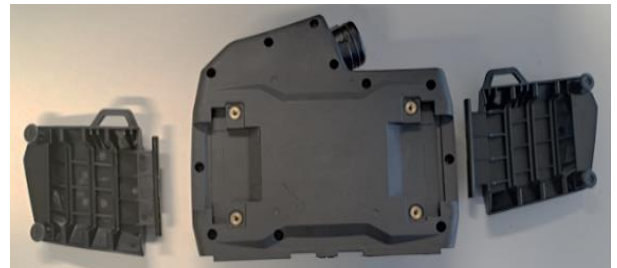
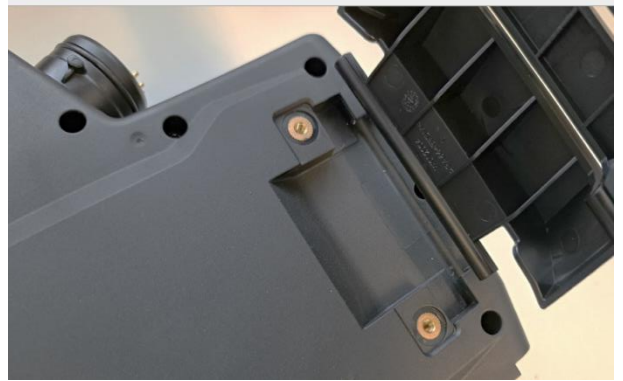
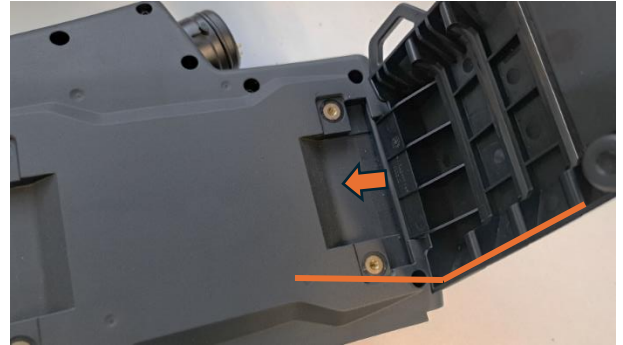


1.



2.



Note: Once the blower unit is mounted on the back, it cannot be switched on or off. The PAPR Backpack system is certified for use with Beta and Zeta helmets.

Mounting instruction

W030001 R00

Monteringsvejledninger – Montageanleitungen – Instrucciones de montaje – Asennusohje –
 Instructions de montage – Istruzioni di montaggio – Bevestigingsinstructies – Monterings-
 instruksjoner – Instrukcja montazu – Adisionais de montagem – Инструкции по монтажу –
 Monteringsanvisning – 安装指导

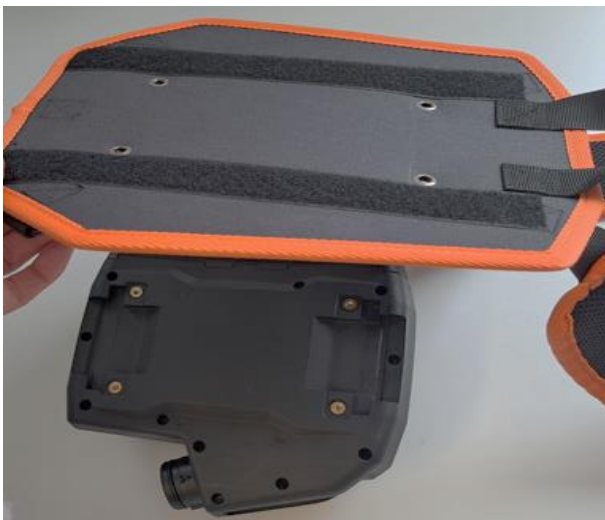
3.



4.



5.



6.



Note: Once the blower unit is mounted on the back, it cannot be switched on or off. The PAPR Backpack system is certified for use with Beta and Zeta helmets.

Mounting instruction

W030001 R00

Monteringsvejledninger – Montageanleitungen – Instrucciones de montaje – Asennusohje –
 Instructions de montage – Istruzioni di montaggio – Bevestigingsinstructies – Monterings-
 instruksjoner – Instrukcja montazu – Adisionais de montagem – Инструкции по монтажу –
 Monteringsanvisning – 安装指导



Note: Once the blower unit is mounted on the back, it cannot be switched on or off. The PAPR Backpack system is certified for use with Beta and Zeta helmets.

Mounting instruction

W030001 R00

Monteringsvejledninger – Montageanleitungen – Instrucciones de montaje – Asennusohje –
Instructions de montage – Istruzioni di montaggio – Bevestigingsinstructies – Monterings-
instruksjoner – Instrukcja montazu – Adisionais de montagem – Инструкции по монтажу –
Monteringsanvisning – 安装指导